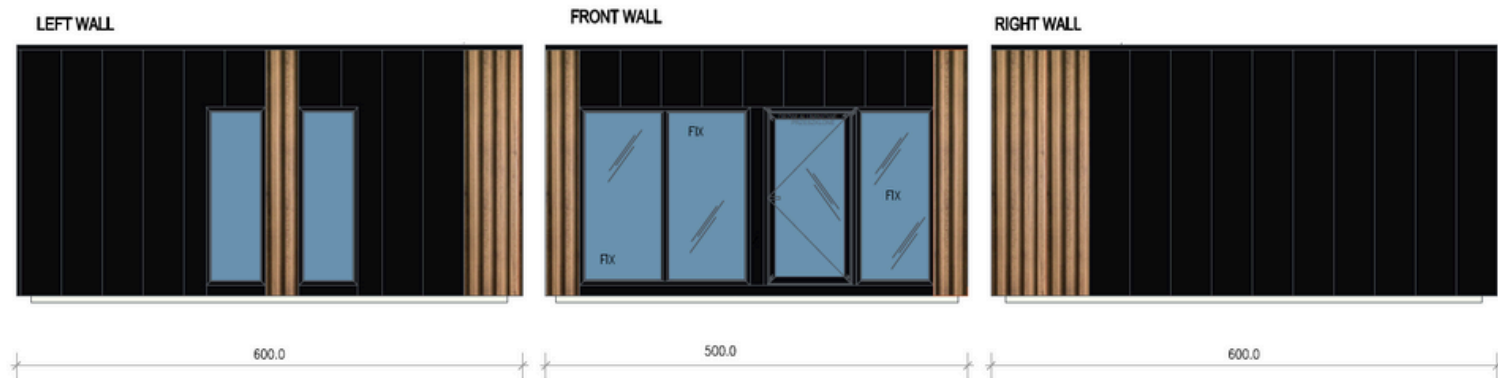


CABIN CHLOE

5,0M X 6,0M (30m²)/16 ft X 20 ft (320ft²)



SPECIFICATION

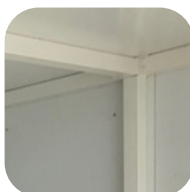
MEASUREMENTS

Dimensions: 5m (L) x 6m (W) / 16ft x 20ft
Internal Height: 2.7m to 2.5m
Available Sizes:
6x6; 6x7; 6x8; 5x5; 5x6; 5x7; 5x8



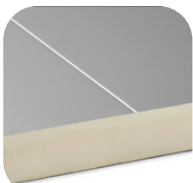
FRAME

Full steel frame system with four eye bolts on the roof, allowing easy movement from A to B.



INTERNAL WALLS FINISH

Smooth white steel sheets with hygienic certification, easy to clean



WALLS & ROOF

Made from fully insulated sandwich panels with a polyurethane core.



FLOORING

- Robust construction frame
- Sandwich panel with chipboard
- Commercial lino finish in Earl Grey color



EXTERNAL CLADDING OPTIONS:

Steel coffer in a specific color .



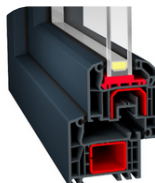
DOOR

Aluminum single or double door in graphite with double-glazed glass.



WINDOWS

PVC windows with double-glazed glass; dimensions as per the drawing.



QUALITY

Quality guarantee at every stage of execution.



EXPERIENCE

10 years of market presence.



MOBILITY

Fast and tailored service to meet customer needs.



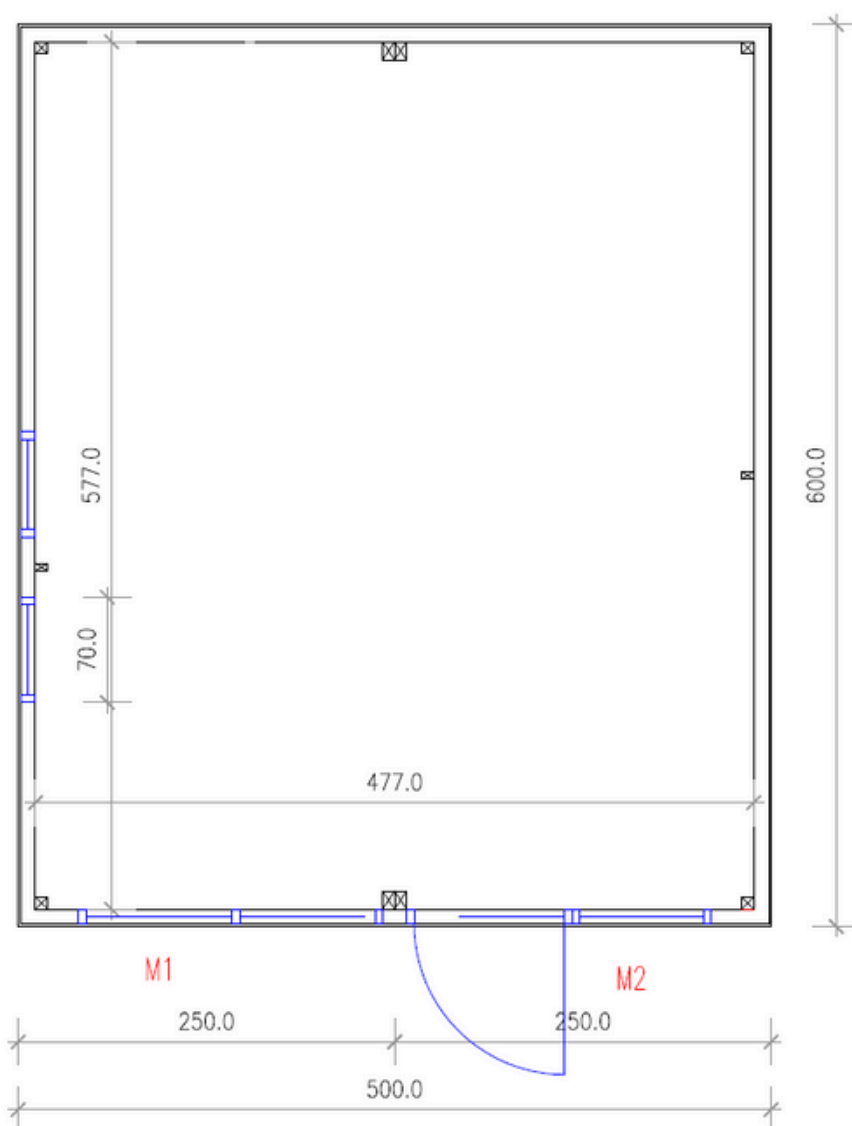
DEVELOPMENT

Continual pursuit of providing the best solutions.

07551 398823

info@mobileunits.co.uk

www.mobileunit.co.uk



PayPal

ADDITIONALS



PARTY WALLS
& DOORS



BATHROOMS



ELECTRICAL
INSTALLATIONS



WATER AND
SEWAGE
INSTALLATIONS



KITCHENETTE



HPL CABINS



RADIATOR



AIR CONDITIONER

OUR CLIENTS



QUALITY

Quality guarantee
at every stage of
execution.



EXPERIENCE

10 years of market presence.



MOBILITY

Fast and tailored service
to meet customer needs.



DEVELOPMENT

Continual pursuit of providing the
best solutions.



@MobileUnits.co.uk



@mobileunits.co.uk

07551 398823

info@mobileunits.co.uk



www.mobileunit.co.uk