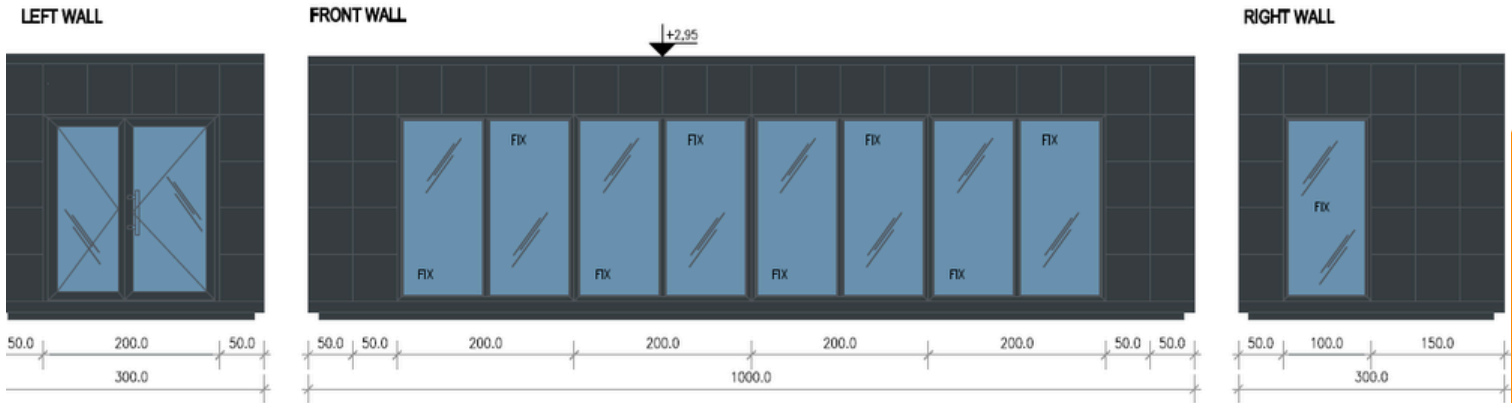


## PORTABLE OFFICE - CABIN - MODULAR BUILDING- "IAN" 10M X 3M (30m<sup>2</sup>)/ 32 ft X 10 ft (320ft<sup>2</sup>)



## SPECIFICATION



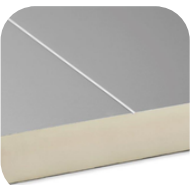
### MEASUREMENTS

Dimensions: 10m (L) x 3m (W) x 3m (H)  
Internal Height: 2.6m to 2.5m  
Available Sizes:  
6m x 3m, 7m x 3m, 8m x 3m, 9m x 3m



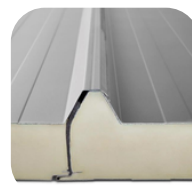
### FRAME

Full steel frame system with four eye bolts on the roof, allowing easy movement from A to B.



### INTERNAL WALLS FINISH

Smooth white steel sheets with hygienic certification, easy to clean



### WALLS & ROOF

Made from fully insulated sandwich panels with a polyurethane core.



### FLOORING

- Robust construction frame
- Sandwich panel with chipboard
- Commercial lino finish in Earl Grey color



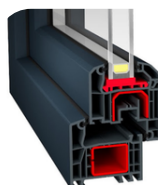
### EXTERNAL CLADDING OPTIONS:

Steel coffering in a specific color.



### DOOR

Aluminum single or double door in graphite with double-glazed glass.



### WINDOWS

PVC windows with double-glazed glass; dimensions as per the drawing.



### EXPERIENCE

10 years of market presence.



### QUALITY

Quality guarantee at every stage of execution.



### MOBILITY

Fast and tailored service to meet customer needs.



### DEVELOPMENT

Continual pursuit of providing the best solutions.

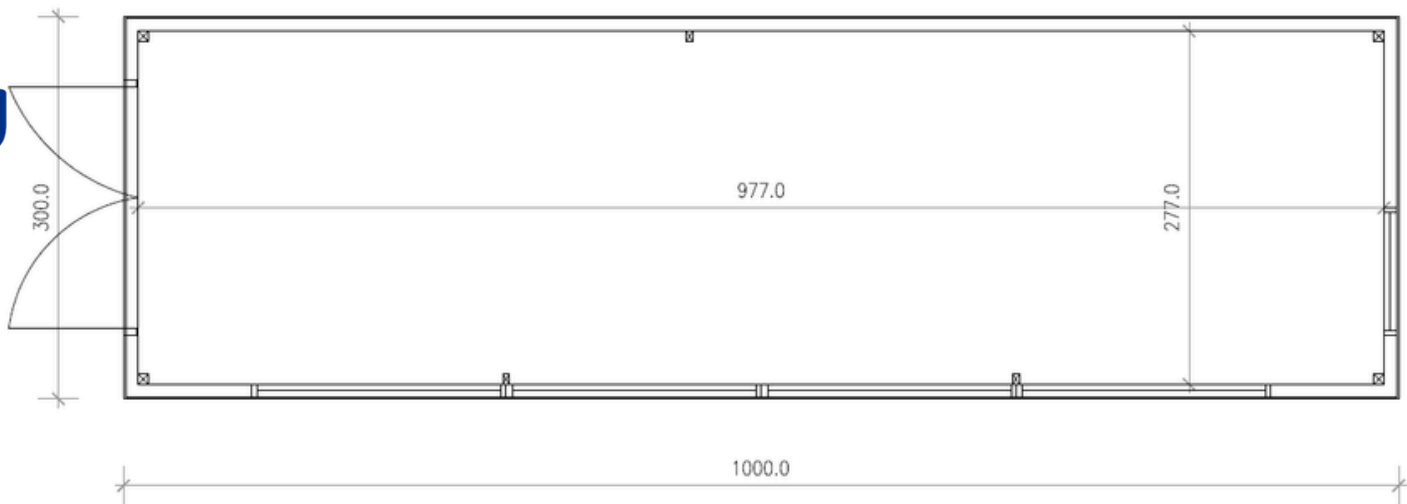
☎ 07551 398823

✉ info@mobileunits.co.uk

🛒 www.mobileunit.co.uk



FLOOR PLAN



# ADDITIONALS



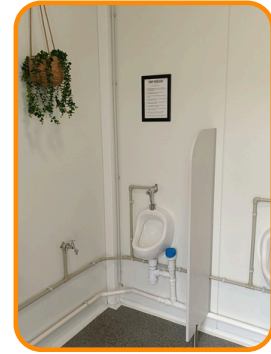
PARTY WALLS & DOORS



BATHROOMS



ELECTRICAL INSTALLATIONS



WATER AND SEWAGE INSTALLATIONS



KITCHENETTE



HPL CABINS



RADIATOR



AIR CONDITIONER

## OUR CLIENTS



**QUALITY**

Quality guarantee at every stage of execution.



**EXPERIENCE**

10 years of market presence.



**MOBILITY**

Fast and tailored service to meet customer needs.



**DEVELOPMENT**

Continual pursuit of providing the best solutions.