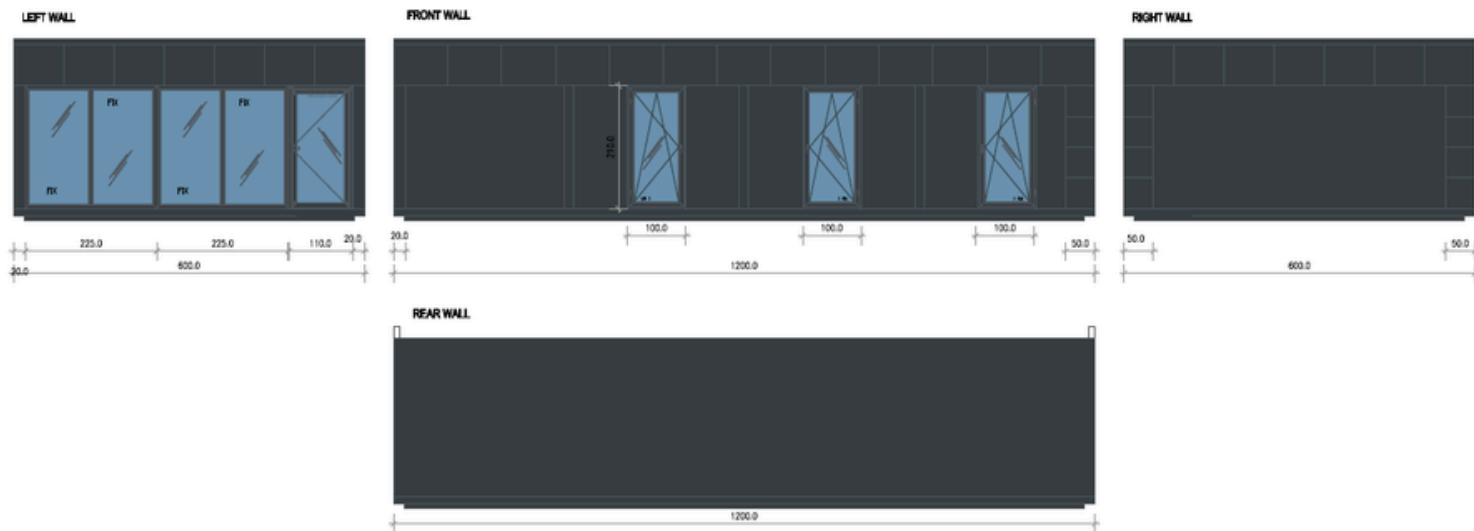


## PORTABLE OFFICE - CABIN - MODULAR BUILDING "MATTCHEW"

12m x 6m (72m<sup>2</sup>)/40ft x 20ft (800ft<sup>2</sup>)



### SPECIFICATION

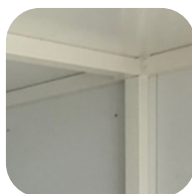
#### MEASUREMENTS

Dimensions: 12mx6m(72m<sup>2</sup>)/40ftx20ft  
Internal Height: 2.7m to 2.5m



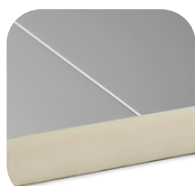
#### FRAME

Full steel frame system with four eye bolts on the roof, allowing easy movement from A to B.



#### INTERNAL WALLS FINISH

Smooth white steel sheets with hygienic certification, easy to clean



#### WALLS & ROOF

Made from fully insulated sandwich panels with a polyurethane core.



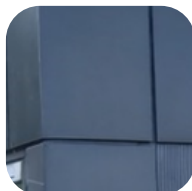
#### FLOORING

- Robust construction frame
- Sandwich panel with chipboard
- Commercial lino finish in Earl Grey color



#### EXTERNAL CLADDING OPTIONS:

Steel coffers in a specific color .



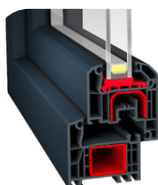
#### DOOR

Aluminum single or double door in graphite with double-glazed glass.



#### WINDOWS

PVC windows with double-glazed glass; dimensions as per the drawing.



#### EXPERIENCE

10 years of market presence.



#### QUALITY

Quality guarantee at every stage of execution.



#### MOBILITY

Fast and tailored service to meet customer needs.



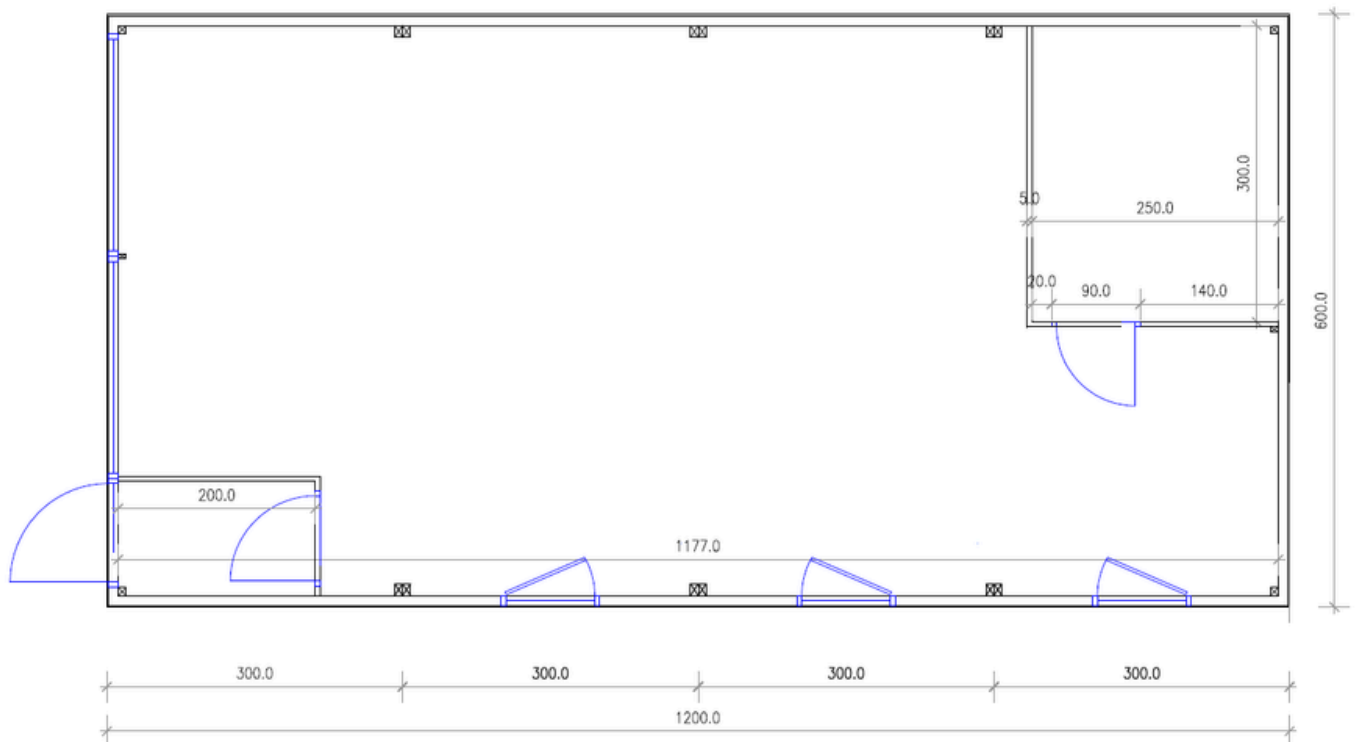
#### DEVELOPMENT

Continual pursuit of providing the best solutions.

07551 398823

info@mobileunits.co.uk

www.mobileunit.co.uk



**PayPal**

 @MobileUnits.co.uk

 @mobileunits.co.uk



07551 398823



info@mobileunits.co.uk



www.mobileunits.co.uk

# ADDITIONALS



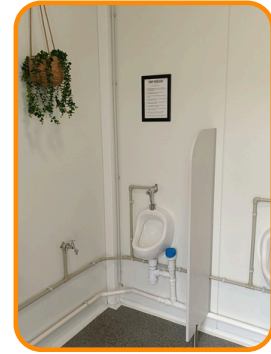
PARTY WALLS & DOORS



BATHROOMS



ELECTRICAL INSTALLATIONS



WATER AND SEWAGE INSTALLATIONS



KITCHENETTE



HPL CABINS



RADIATOR



AIR CONDITIONER

## OUR CLIENTS



**QUALITY**

Quality guarantee at every stage of execution.



**EXPERIENCE**

10 years of market presence.



**MOBILITY**

Fast and tailored service to meet customer needs.



**DEVELOPMENT**

Continual pursuit of providing the best solutions.