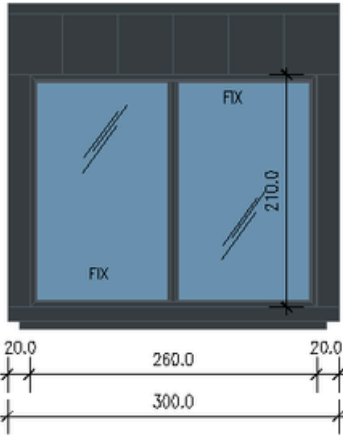


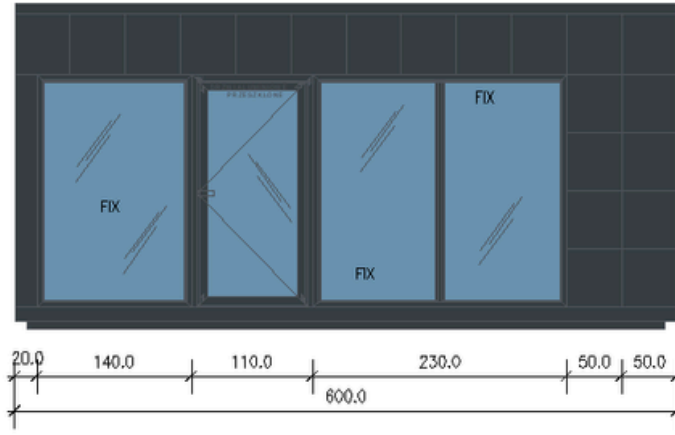
## CABIN AVA

6,0M X 3,0M (18m<sup>2</sup>)/ 20 ft X 10 ft (200ft<sup>2</sup>)

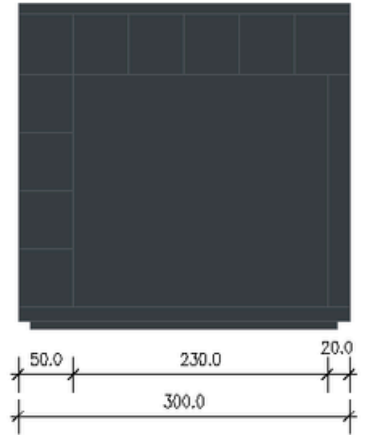
LEFT WALL



FRONT WALL



RIGHT WALL



## SPECIFICATION

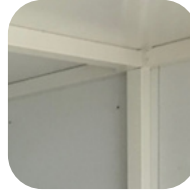
### MEASUREMENTS

Dimensions: 6m (L) x 3m (W) x 3m (H)  
Internal Height: 2.6m to 2.5m  
Available Sizes:  
8m x 3m, 7m x 3m,



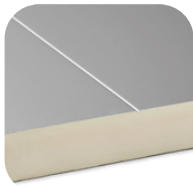
### FRAME

Full steel frame system with four eye bolts on the roof, allowing easy movement from A to B.



### INTERNAL WALLS FINISH

Smooth white steel sheets with hygienic certification, easy to clean



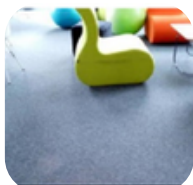
### WALLS & ROOF

Made from fully insulated sandwich panels with a polyurethane core.



### FLOORING

- Robust construction frame
- Sandwich panel with chipboard
- Commercial lino finish in Earl Grey color



### EXTERNAL CLADDING OPTIONS:

Steel coffers in a specific color .



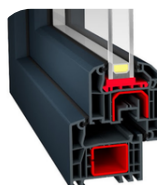
### DOOR

Aluminum single or double door in graphite with double-glazed glass.



### WINDOWS

PVC windows with double-glazed glass; dimensions as per the drawing.



#### QUALITY

Quality guarantee at every stage of execution.



#### EXPERIENCE

10 years of market presence.



#### MOBILITY

Fast and tailored service to meet customer needs.



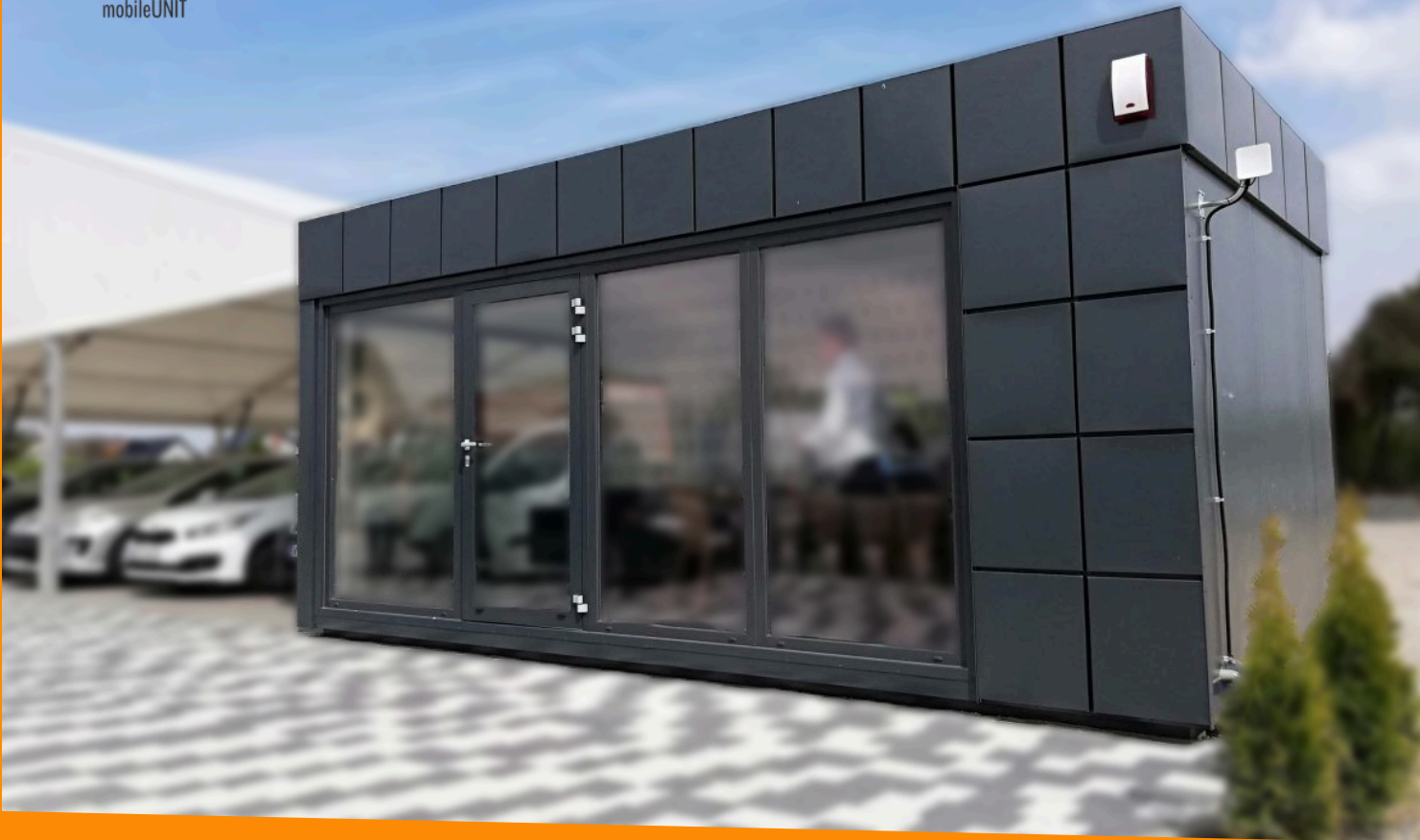
#### DEVELOPMENT

Continual pursuit of providing the best solutions.

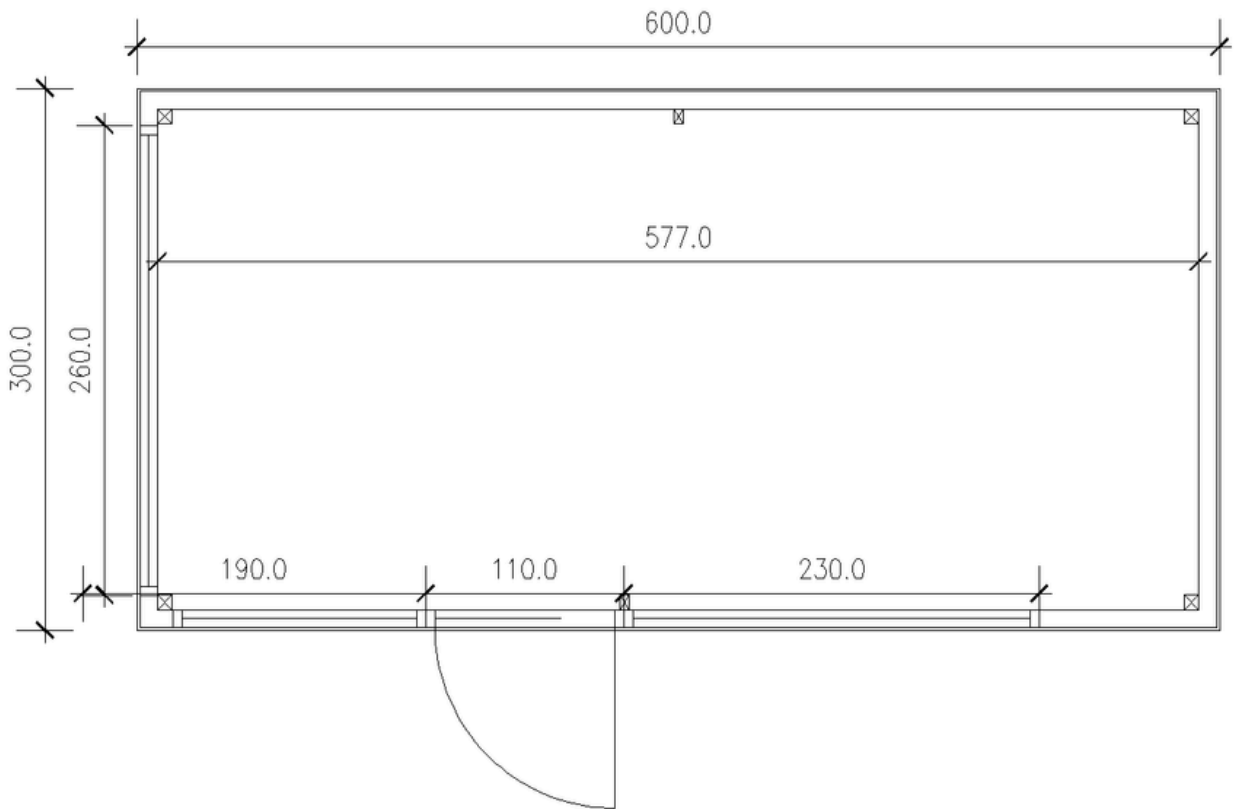
07551 398823

info@mobileunits.co.uk

www.mobileunit.co.uk



FLOOR PLAN



**PayPal**

# ADDITIONALS



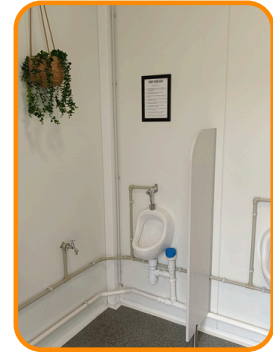
PARTY WALLS & DOORS



BATHROOMS



ELECTRICAL INSTALLATIONS



WATER AND SEWAGE INSTALLATIONS



KITCHENETTE



HPL CABINS



RADIATOR



AIR CONDITIONER

## OUR CLIENTS



**QUALITY**

Quality guarantee at every stage of execution.



**EXPERIENCE**

10 years of market presence.



**MOBILITY**

Fast and tailored service to meet customer needs.



**DEVELOPMENT**

Continual pursuit of providing the best solutions.